

# Auntlee Dot Com

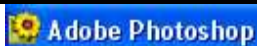
## POLITICAL CARICATURE



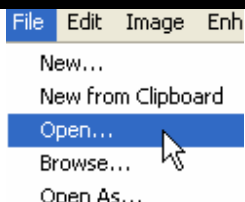
Have you ever heard the expression "A picture is worth a thousand words"? A caricature exaggerates to tell a story or to make a political point.

Political cartoonists often exaggerate - usually George W. Bush is drawn with large ears and no chin, and Senator John Kerry is often drawn with a long chin and big hair.

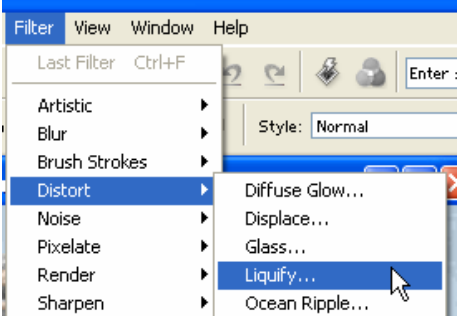
We'll use Photoshop software to create political caricatures just by changing a photo - **NO DRAWING REQUIRED** - then we'll morph the caricatures frame-by-frame.



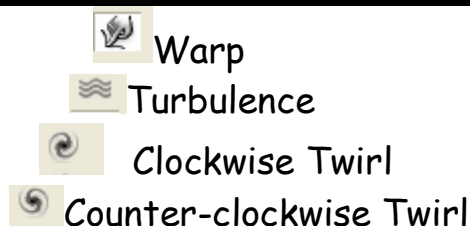
We'll Open Photoshop Elements



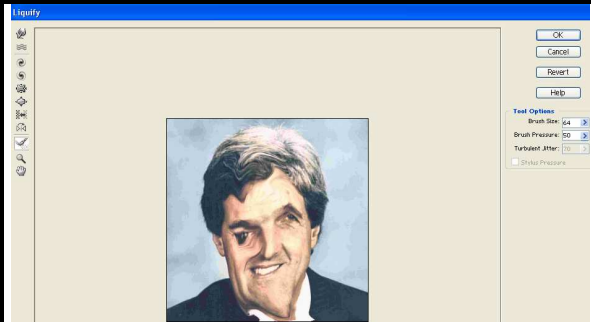
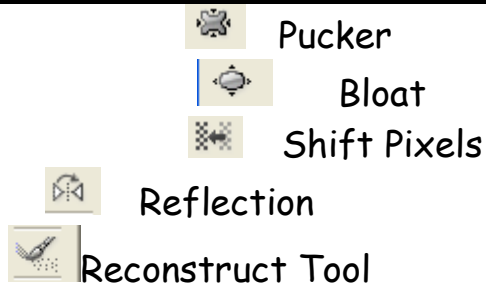
Click File—Open and choose which picture you want to caricature.



Click on Filter—Distort—Liquify.



You'll see a lot of tools at the left.

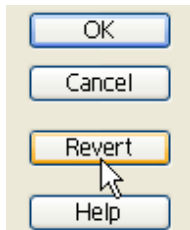


We'll learn them all.



For fun, let's use the **Warp** tool and liquefy, with a result sorta like this:

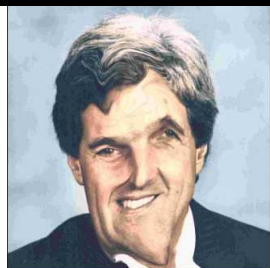
Now look at the menu on the right - you can choose to Revert



When you click the **Revert** button, the picture will go back to the



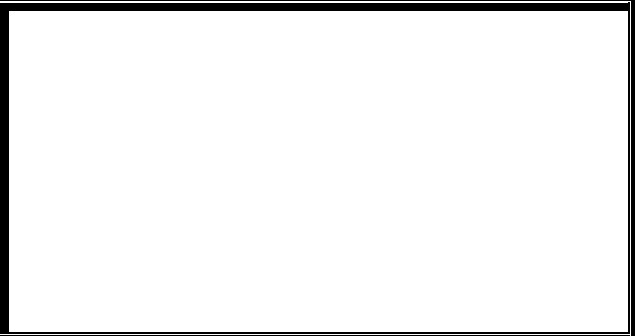
beginning.





**Warp** tool again, and this time use the **Reconstruct** Brush to revert just parts of the picture.


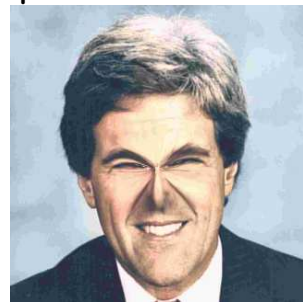


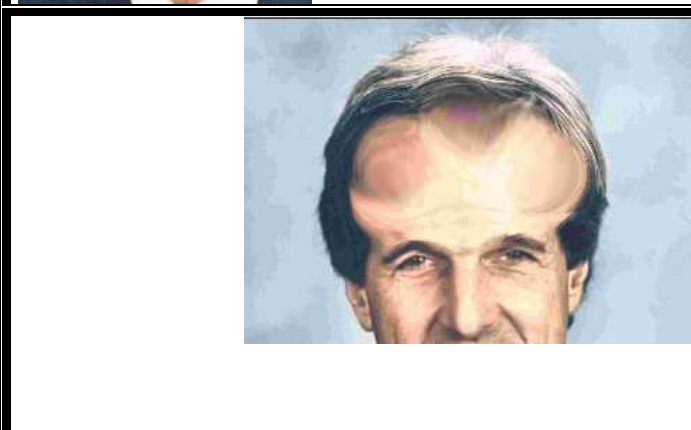
The **Turbulence** Tool scrambles the pixels - use it to push back a hairline...



Use the **Twirl** tools   to make weird eyes and a crooked nose...




Use the **Pucker** Tool  to pucker up the mouth & chin...  
 or around the eyes...

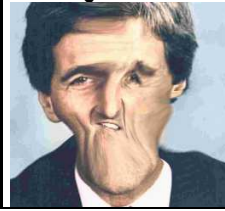



Use the **Bloat** tool  to make a really big brain...  
...or ears





Use the **Shift Pixels** tool  to put some weight on...  
...or just rearrange features...



The **Reflection** tool  makes copies of different areas of the picture, with interesting results.

Keep stirring and see what you come up with!



If you like your result, click OK

OK

To add **Cartoon Bubble Text**:



Choose the Shape Tool.



Draw in the Cartoon Bubble Box.



Now, to put your words in, choose the Text Tool.

Medium    Courier (T1)    14 pt

Look at the top - the Text toolbar will show up - you can choose text style & size & color.



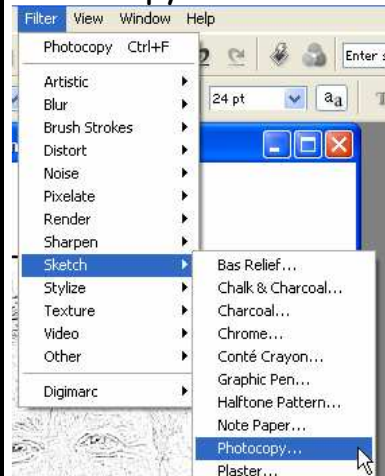


There's  
Always  
A  
Next  
Time!

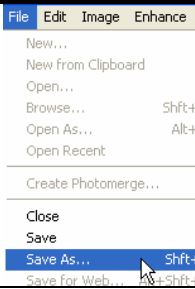
Type in your words - make sure the color of the letters will show up on the white box.



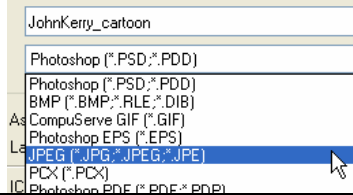
If you'd like your picture to look like you drew it, try one of the Sketch filters - this is the Photocopy filter.



**TO SAVE:**



Select File—Save AS



Be sure to save as a **JPEG**.