

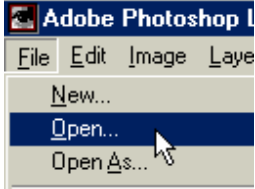
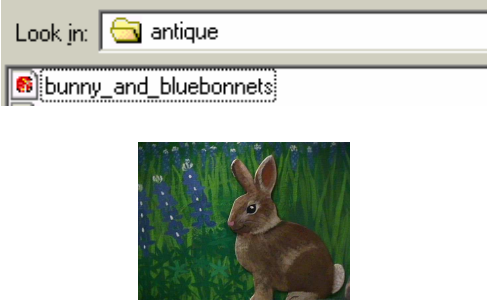
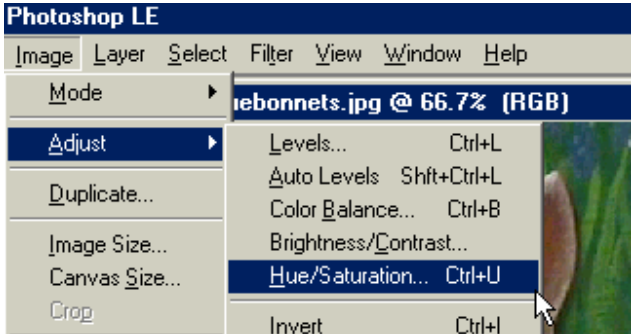
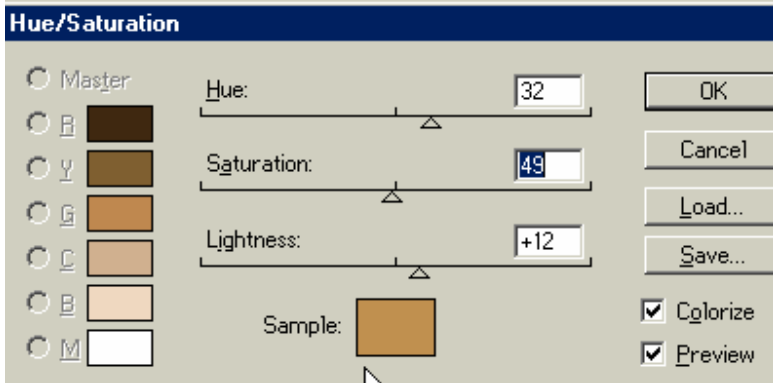


# auntlee dot com

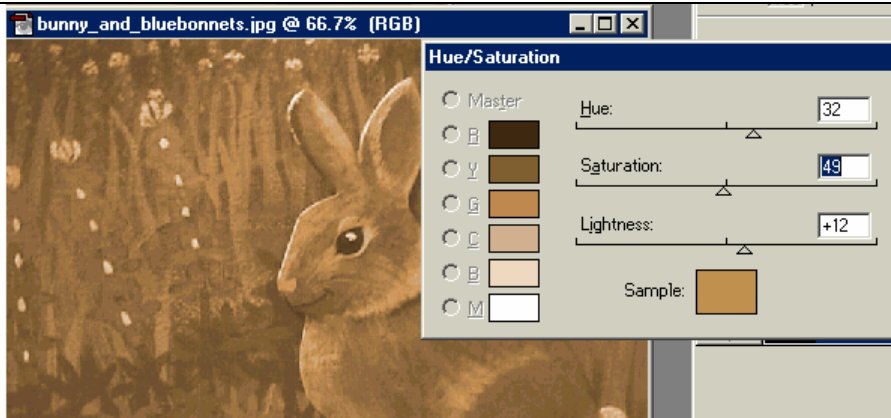
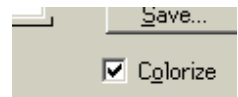
	<p>We're going to use Photoshop to make some "new" antique pictures.</p>
	<p>Open Adobe Photoshop</p>
	<p>Go to File---Open</p>
	<p>Open your picture</p>
<p>Look here:</p> 	<p>Click Image--- Adjust--- Hue/Saturation</p>



You can type in numbers or adjust the slider bars.

To start, put in 32 for Hue, 49 for Saturation, and 12 for Lightness.

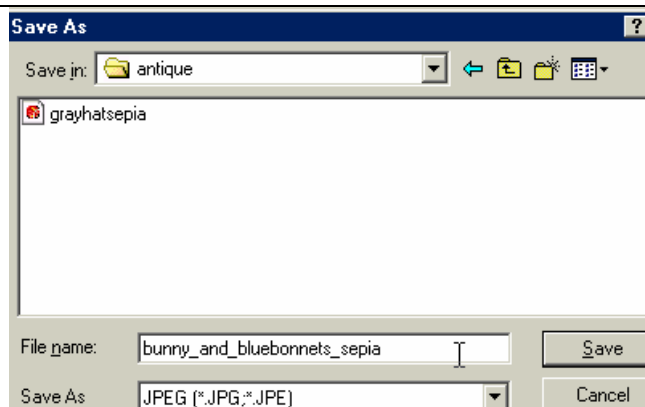
Make sure the Colorize box is checked!



You can adjust the slider bars until you get the picture just the way you want it.



You can also go for a blue-toned antique color – try Hue = -149; Saturation = 15.



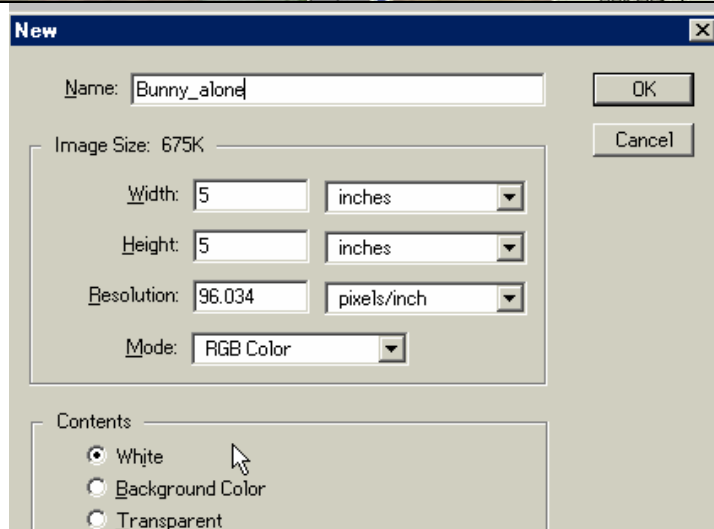
When you get it the way you want it, go to File--- Save As and save the file with a new name. There you go - instant history!



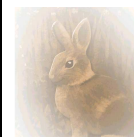


Tip – if the picture comes out the wrong way, go to **image---rotate canvas**—and choose the correct degree to change it up.

Experiment till you get it right.

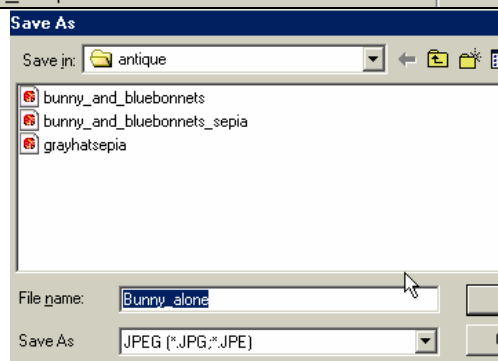


You can create a “feathered” look by moving part of your picture to a new document.



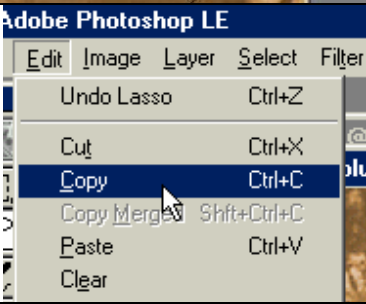



First, create a new document

Give it a name



Immediately “save as” and make sure it’s a .jpg file.

	 <p>use the Lasso tool to select part of your original image.</p> <p>Draw around what you want to keep.</p> <p>Make the feather box 100 pixels.</p> <p>(if this box isn't open, hit "enter" when the lasso tool is chosen)</p>
	<p>Choose Edit—Copy.</p> <p>Then go to your blank document and choose Edit—paste.</p>
	<p>Very cool Effect, isn't it?</p>